

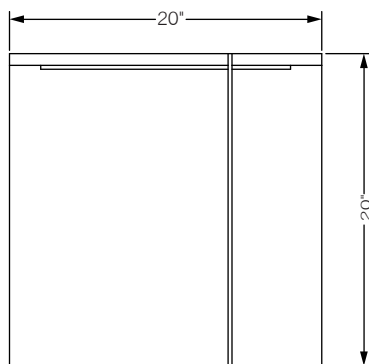
## division side table

Collection of architecturally inspired side and coffee tables, fabricated out powder coated metal bases with travertine or marble tops. The tops are divided by a protruding metal strip, thus the name Division.

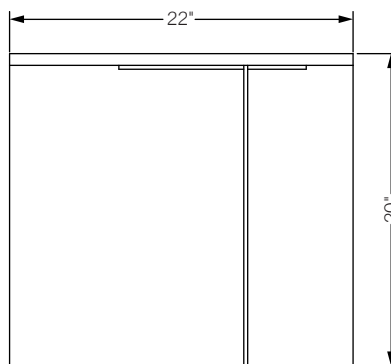


**Specifications** Solid steel sheet available in a flat black or white powder coat finish. Powder coat finishes are available in custom colors. Travertine, white carrara, or negro marquina marble top. Marble available with polished or honed finish.

**Total dimensions** W 20" D 22" H 20"



front



side